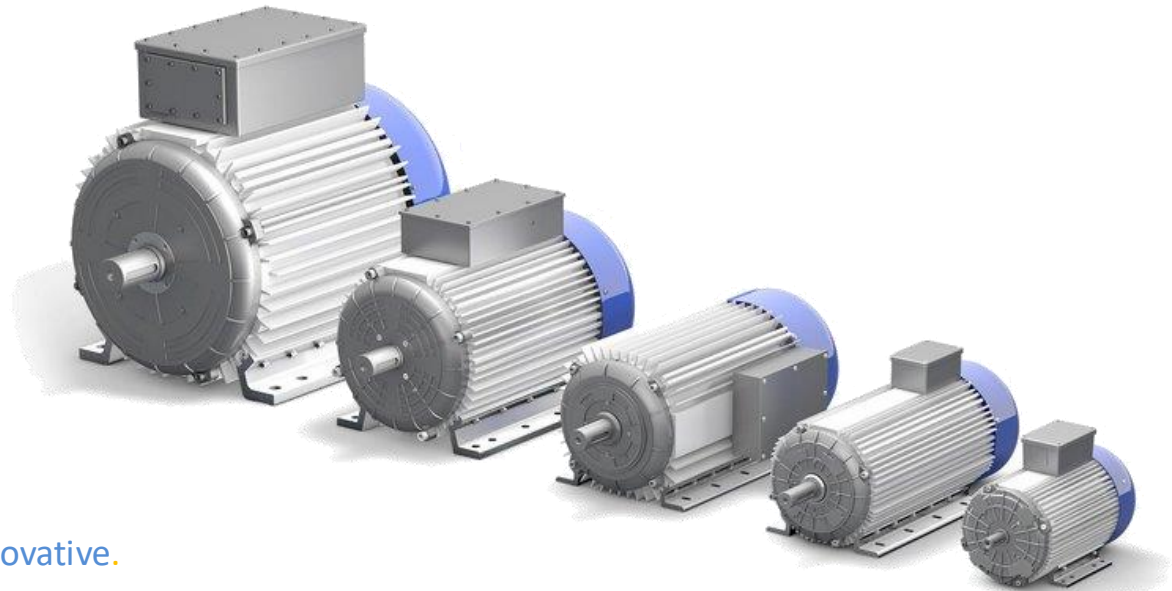


About us

KWG-Generators –

your partner for high-performance generators in industry, building, transportation and military. We offer brushless synchronous generators up to 550 kVA with increased protection class. The electronic generator control can be integrated in existing systems via CAN-port.



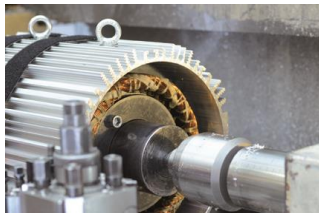
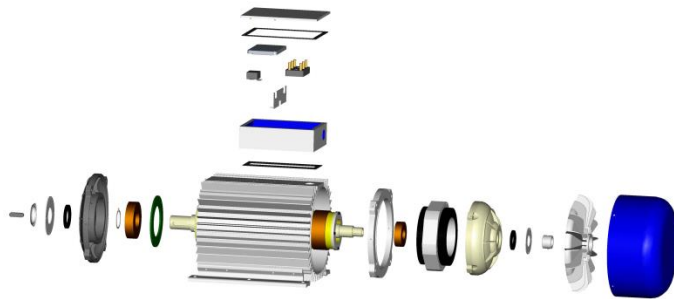
KWG-Generators. Powerful. Innovative.

About us

KWG-Generators –

was founded in 2006. In 2022 KWG has 45 employees.

Developing, production and marketing of synchrongenerators and electronic controlers is our main know-how.



Products

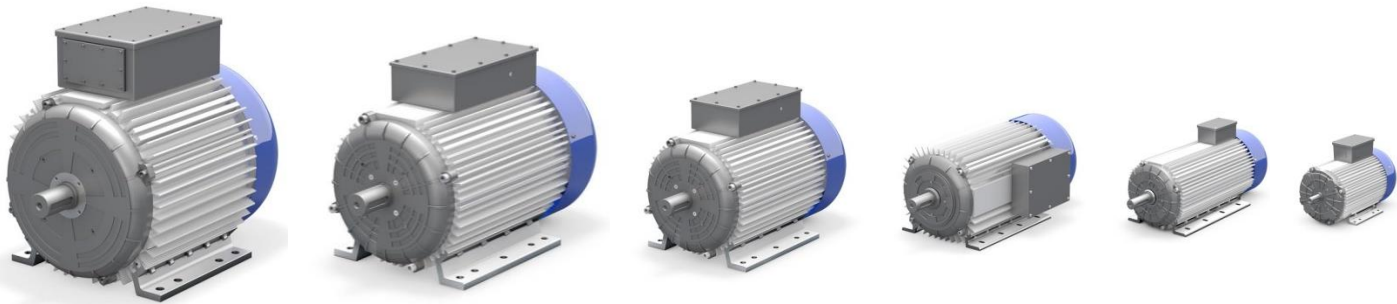
We offer synchronous generators, generators for magnetic plate applications, charging generators and corresponding accessories.



Products

Synchronous Generators – Overview

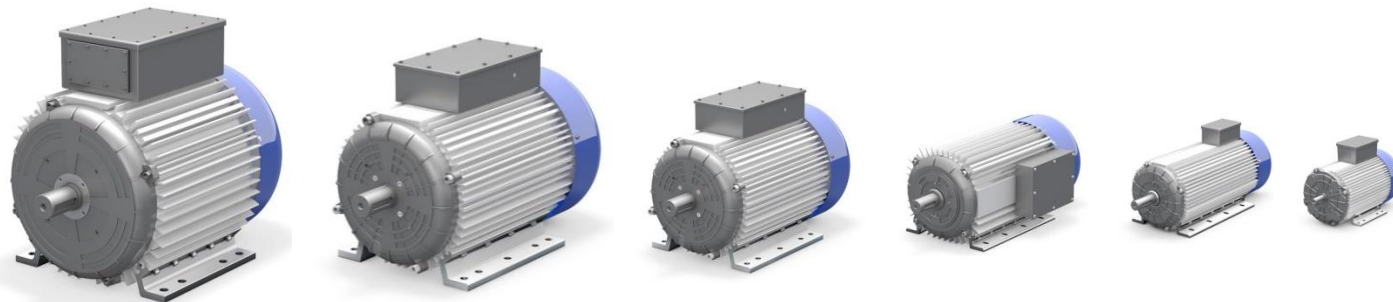
- brushless
- self-excited
- integrated generator controller with standard CAN SAE 1939
- universal flange connection options
- all standard single phase and three-phase voltages available
- IP54 up to IP67
- maintenance-free up to 20,000 hours



Products

Synchronous Generators – Overview

BG	2 pole Power [kVA]	2 pole Speed [rpm]	4 pole Power [kVA]	4 pole Speed [rpm]	Single bearing available
132	7-25	3000-4500	5-15	1500-3600	yes
160	25-50	3000-4500	20-40	1500-3600	yes
200			40-55	1500-2200	yes
250			60-135	1500-2200	yes
280			145-220	1500-2200	yes
355			225-550	1500-2200	yes



Products

Generator for Magnet Plate Systems *GEMA*

- brushless, self-excited, integrated generator controller with standard CAN
- 2-pole: 9, 15, 20 and 30 kW, 3000 rpm – range: 2700– 3600 rpm
- 4-pole: 9, 15, 20 and 30 kW, 1800 rpm – range: 1800– 2500 rpm
- universal flange connection options for adapting hydraulic motors
- service-friendly design
- controller box completely pluggable
- communication with “HMI” control unit via CAN
at the same time it serves as a system diagnostic unit
- user-friendly operation through pre-defined programs
with plain text display
- maintenance-free up to 20,000 hours
- IP54 up to IP67



Products

Charging Generator

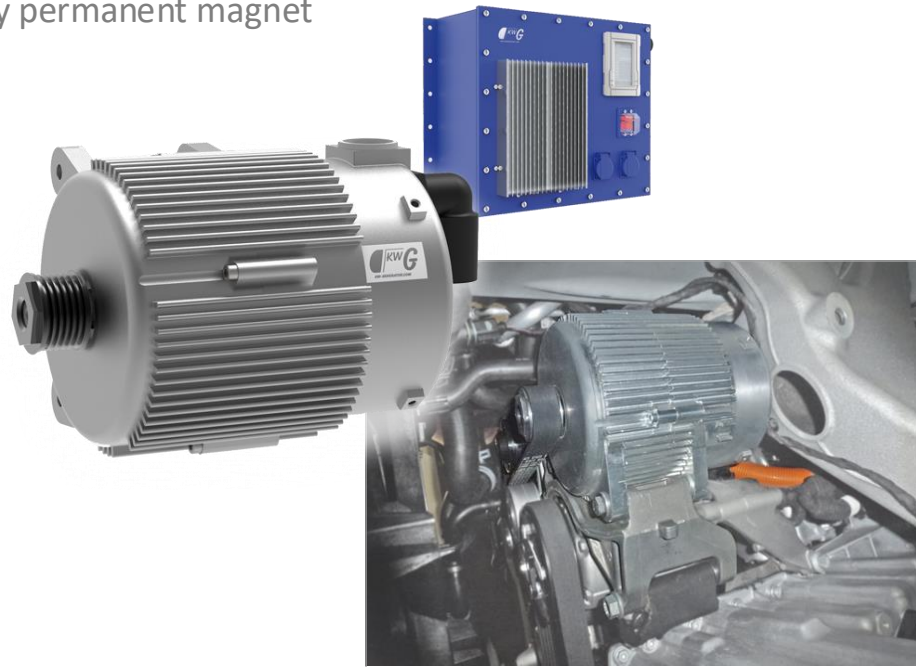
- brushless
- self-excited
- integrated generator controller with standard CAN SAE 1939
- single and two bearing generators available
- universal flange connection options
- standard voltages from 12 – 96 V
- service-friendly design
- charging currents up to 350 A
- IP54 up to IP67
- maintenance-free up to 20,000 hours



Products

PMG Systems

- 4/10 kW power
- continuous performance on low idle mode
- high power density by permanent magnet
- protection class IP67
- CAN and fireCAN
- fuel saving



Accessories

- We offer various accessories
 - service Tool HMI
 - insulation monitoring modules
 - SAE-flange (SAE5, SAE4 und SAE3 flange)
 - hydraulics adapter unit
 - switch Boxes



Services

- We offer
 - customized solutions
 - **creo** 3D construction
 - data exchange
 - on-site measurements
 - performance acceptance test for prototypes



AVR adaption

Parameter Manager

Parameter Manager 6.30

Par 95
am 02.06.14 vor Ort angepasst
DVR2-kompat.

p-version: 6
p-set-id: 95
p-length: 98

S-No. GEN: 0
S-No. DxR: 0
worker: 255

Activ: PIC-SW: P-Vers:
CAN: DxR:

Parameter-Set: p-id: 0, mod: 0

U(f) LEXC: Gen-SNo: 0, DxR-SNo: 0, Worker: 0

day: 01, month: 01, year: 00

Param A
Param R
Param T
History
Monitor
Oszi
J1939
CAN_DxR
Debug
Oszi-Fast
Länge / ms: 1000

Online

K - Verstärkung: 0, 0,005, 0,01

Tn - Nachhaltezeit [ms]: 0, 2500, 5000

KP: 0,5, KI: 0,5

EXT_U1: 0, EXT_U2: 0

Allgemeine Daten

230	P000_I_LFE
2	P001_C_POLZAHL
2	P002_C_LAGER_ART
0	P003_C_GENART
132	P005_C_BAUGROESSE
0	P006_C_WICKLUNGSART
88	P010_C_WIRKUNGSGRAD
0	P011_F_IERR_PNENN
2	P028_F_IERR_LIMIT
25	P012_C_GEN_PNENN
0	P013_C_GEN_PKURZ
<input type="checkbox"/>	P014_TALEMA
<input type="checkbox"/>	P014_I_MODUL
<input type="checkbox"/>	P083
3,12221	P004_F_I_SKAL
<input checked="" type="checkbox"/>	P014_LAYOUT
<input type="checkbox"/>	P014_CAN_R
<input type="checkbox"/>	P014_DVRDSR
<input type="checkbox"/>	P014_DCDC
<input type="checkbox"/>	P014_RELAY
<input type="checkbox"/>	P059_B_ISO_MODUL
<input type="checkbox"/>	P016_B_BURDEN
0	P070_C_CAN_MODE

Sollwerte

AC-3	P022_C_SENSE_MODE
231	P021_F_U_NENN
<input type="checkbox"/>	P015_B_FL_LUPE
100	P023_F_U_LIMP_HOME
60	P045_C_U_LOW_1
50	P046_C_U_LOW_2
<input type="checkbox"/>	P080_B_U_KORR_AIN
<input checked="" type="checkbox"/>	P079_B_U_KORR_POTI
85	P081_C_U_KORR_LOW
115	P082_C_U_KORR_HIGH
<input type="checkbox"/>	P027_B_IERR_DYN_FLAG
4	P029_F_IERR_DYN_LIMIT
10000	P030_I_IERR_DYN_LEN
30000	P031_I_IERR_DYN_LOCK
<input type="checkbox"/>	P033_B_ANTI_DYN_FLAG
110	P034_C_ADVN_FALL_BACK

Relaisfunktionen

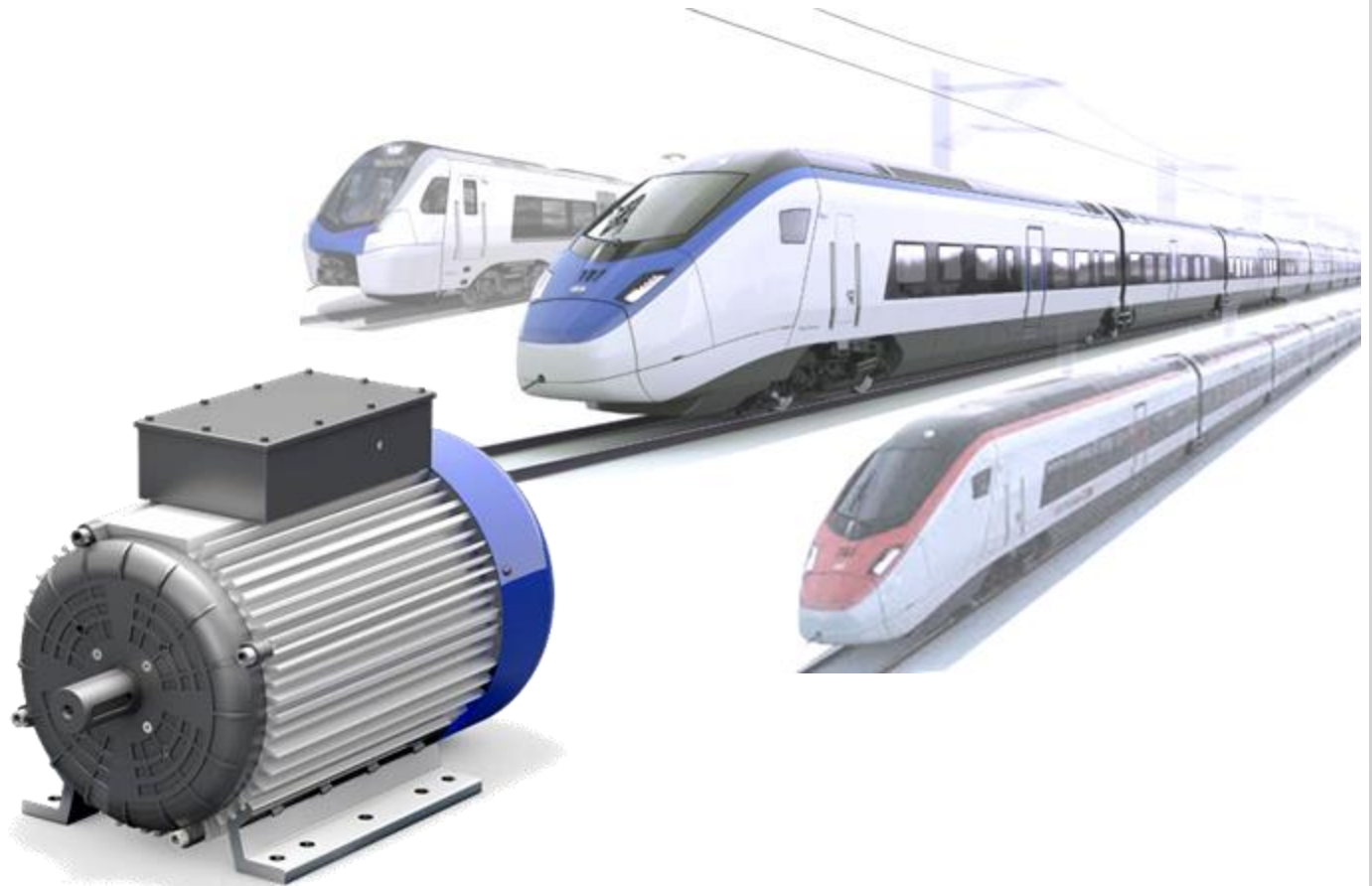
off	P047_C_RELAIS_FUNC
<input type="checkbox"/>	P048_B_RELAIS_INIT
<input type="checkbox"/>	P066_B_REL_STATE_WARMUP
0	P065_I_RELAIS_WARMUP
0	P049_I_RELAIS_ON_DELAY
0	P050_I_RELAIS_TIME
600	P051_I_RELAIS_OFF_DELAY
0	P055_C_RELAIS_HYSTER
0,05	P054_F_RELAIS_I_LEVEL
0	P056_F_IERR_LEVEL
0	P057_I_RELAIS_U_LOW
0	P058_I_RELAIS_U_HIGH
0	P052_C_RELAIS_FREQ_LOW
0	P053_C_RELAIS_FREQ_HIGH

Optokopplerfunktionen

0	P061_C_OPTO_IN
off	P062_C_OPTO_OUT
<input checked="" type="checkbox"/>	P089_B_OPTO_INIT
0	P090_I_OPTO_ON_DELAY
0	P091_I_OPTO_TIME
100	P092_I_OPTO_OFF_DELAY
1	P096_C_OPTO_HYSTER
0,05	P095_F_OPTO_ILLA_LEVEL
0	P097_F_OPTO_IERR_LEVEL
0	P098_I_OPTO_U_LOW
100	P099_I_OPTO_U_HIGH
0	P093_C_OPTO_FREQ_LOW
0	P094_C_OPTO_FREQ_HIGH

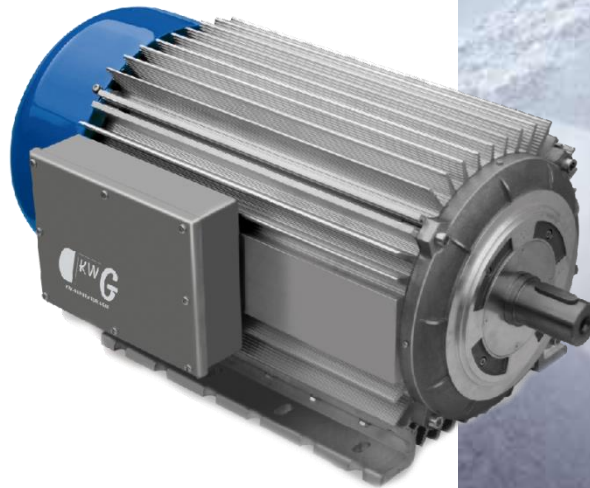
Application

Railway



Application

Electric Traction



Application

Paving



Application

Material Handling



Application

Genset



Application

Firetruck



Application

more applications



KW-Generator GmbH & Co.KG

Bänglesäcker 24 | 73527 Schwäbisch Gmünd – Lindach | Germany

Phone: +49 (0) 7171 104 17 – 0 | info@kw-generator.com

