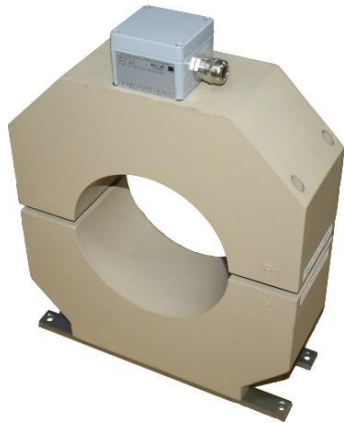


GSKF 150 – Split Core Type Current Transformer

The GSKF 150 are cast-resin insulated current transformers for outdoor applications. They are suitable to put on cables or bus-bars. The cast resin insulated outdoor Split-core current transformer can be used up to 0,72 kV, is maintenance-free and mountable in an upright position or according to the mounting instructions. In case of higher voltage levels the primary conductor must be insulated according to the rated insulation levels.



Ordering Specifications

For the customized design of your ELEQ GSKF 150 current transformer the following information is required:

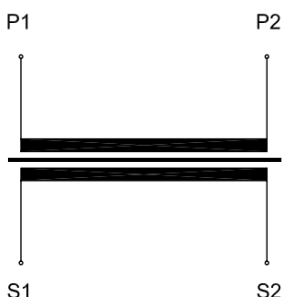
Mandatory

- Rated primary current
- Rated secondary current
- Rated output
- Accuracy class
- Frequency

Optional

- Other relevant requirements
- Secondary switch over
- Multi Core

Wiring diagram IEC 61869-2 for e.g.



Technical specifications

Environmental conditions	
This product is designed to be safe under the following conditions:	
Location:	Outdoor use
Ambient air temperature:	-25°C .. +40°C; other temperatures on request
Storage and transport temperature:	-50°C .. +55°C
Relative humidity:	5% .. 95%, non condensing
Altitude:	Max. 1000m above NN; at >1000m data required
Protection degree (secondary terminal):	IP54
Application conditions	
Standard:	IEC 61869-2 / IEEE C57.13; etc.
IEC 61768-2 specification:	
Rated short-time thermal current (I _{th}):	100 x I _n /1s, max. 100kA/1s, other duration on request
Rated dynamic current (I _{dyn}):	2,5 x I _{th}
Continuous thermal current (I _{cth}):	Up to 200%
Rated insulation level:	0,72/3//-kV
Rated frequency:	50/60Hz
Class of insulation:	E
Rated primary current:	30A - 1500A
Rated secondary current:	1A or 5A; other options available on request
Rated output:	As required. For example 10VA, 15VA
Accuracy class:	As required. For example 0,2S, 5P20
Secondary terminal:	Screw terminals M5 (max. 2,5Nm)

Dimensions and drawing/picture attached

